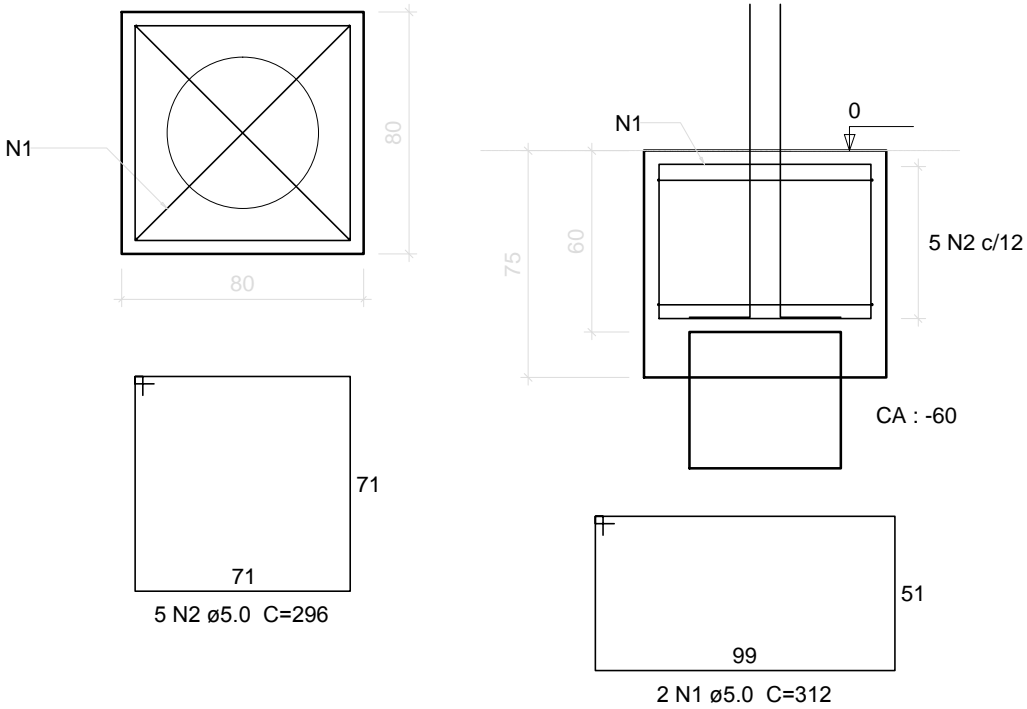
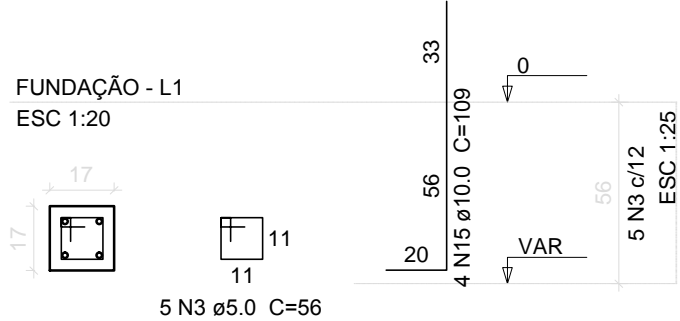


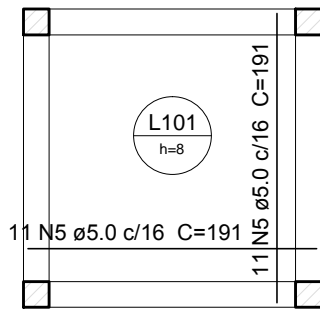
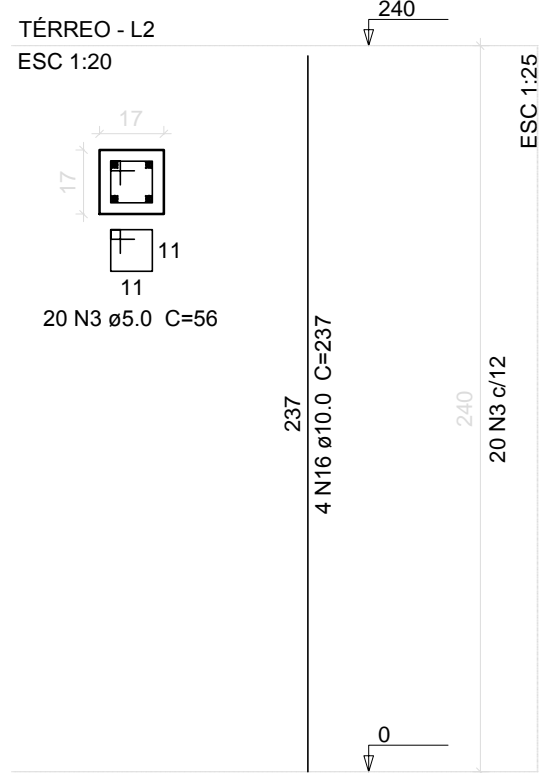
B1=B2=B3=B4
1xC50
PLANTA
ESC 1:25



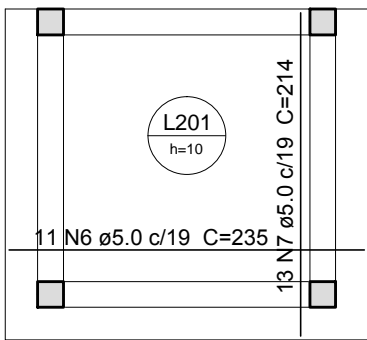
P1=P2=P3=P4



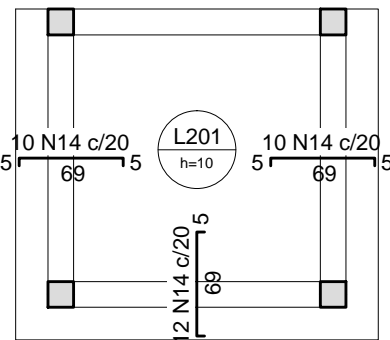
P1=P2=P3=P4



Armação positiva da
laje do pavimento
Baldrame
Escala 1:50



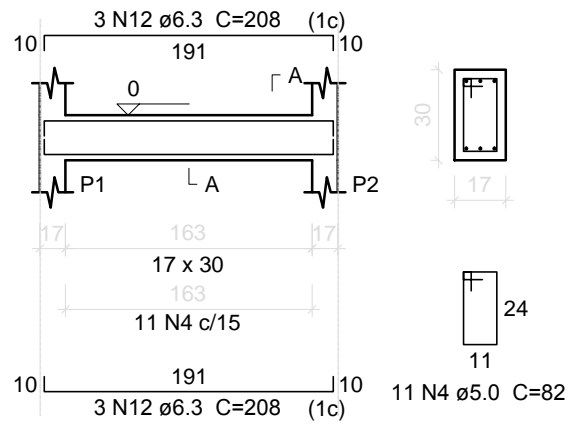
Armação positiva da
laje do pavimento
Térreo
Escala 1:50



Armação negativa da
laje do pavimento
Térreo
Escala 1:50

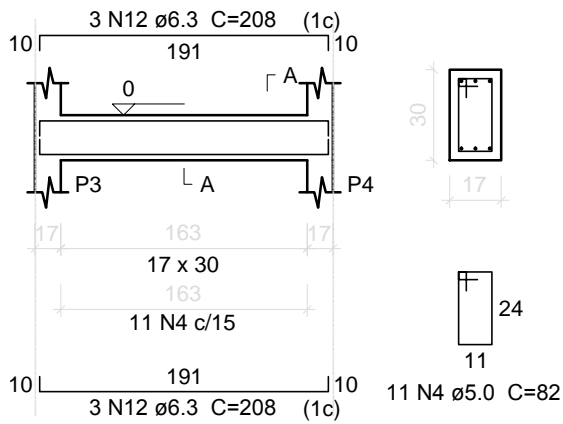
V101

ESC 1:50



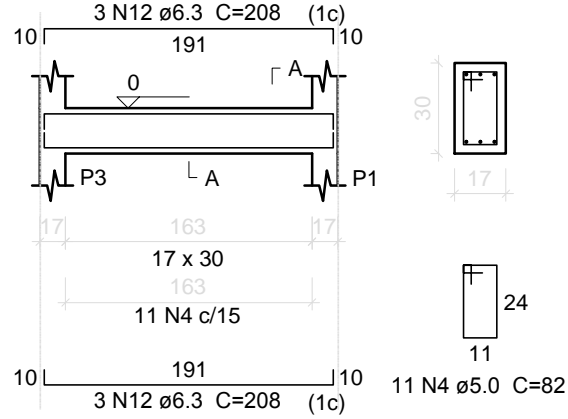
V102

ESC 1:50



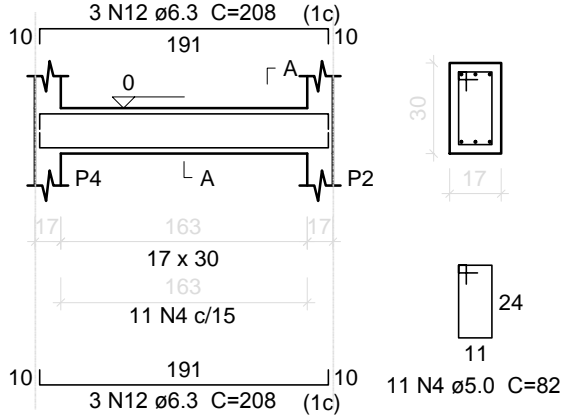
V103

ESC 1:50



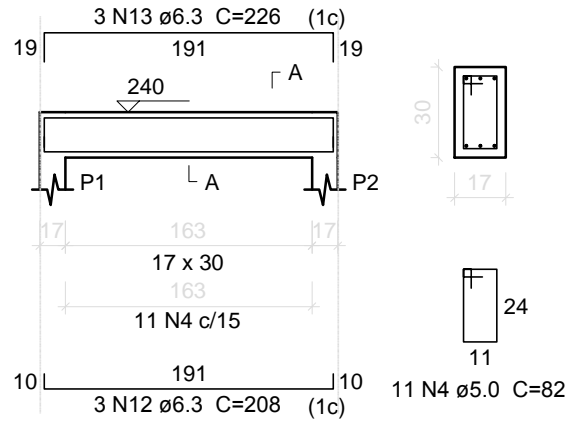
V104

ESC 1:50



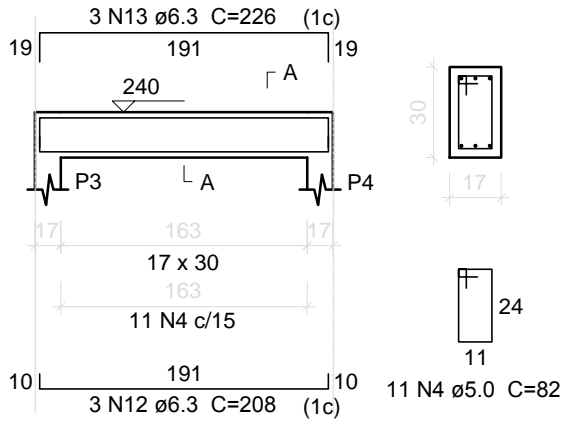
V201

ESC 1:50



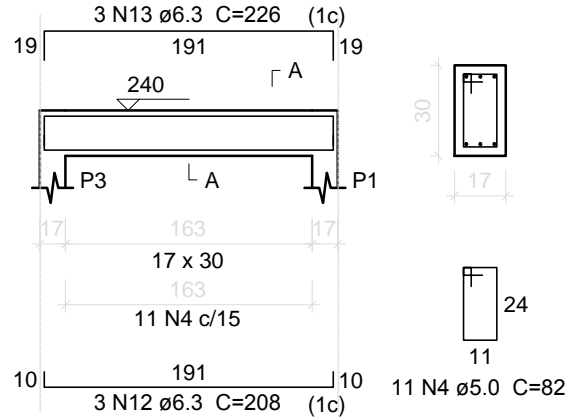
V202

ESC 1:50



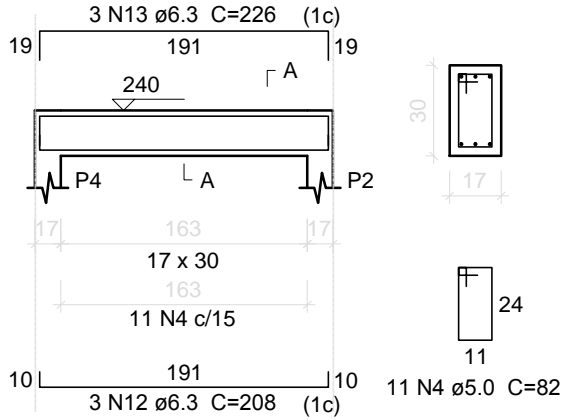
V203

ESC 1:50



V204

ESC 1:50



Relação do aço

AÇO	N	DIAM (mm)	QUANT	C.UNIT (cm)	C.TOTAL (cm)
CA60	1	5.0	8	312	2496
	2	5.0	20	296	5920
	3	5.0	100	56	5600
	4	5.0	88	82	7216
	5	5.0	40	191	7640
	6	5.0	11	235	2585
	7	5.0	13	214	2782
CA50	12	6.3	36	208	7488
	13	6.3	12	226	2712
	14	6.3	32	79	2528
	15	10.0	16	109	1744
	16	10.0	16	237	3792

Resumo do aço

AÇO	DIAM (mm)	C.TOTAL (m)	PESO + 10 % (kg)
CA50	6.3	127.3	34.3
	10.0	55.4	37.6
CA60	5.0	342.4	58.0
PESO TOTAL (kg)			
CA50	71.9		
CA60	58.0		

Volume de concreto (C-25) = 3.57 m³
Volume de concreto estacas (C-25) = 1.57 m³
Área de forma = 37.35 m²
Profundidade estaca = 2.00 m
Ø estaca = 50cm



UNIDADE DE GERENCIAMENTO DE PROJETOS

PROGRAMA PROINFÂNCIA - PROJETO TIPO 2

PROJETO ESTRUTURAL - CASA DE MEDIÇÃO - EMEI'S

EQUIPE TÉCNICA DA UGP

Eng. Civil Mirela de Faria - CREA.RS 146401

Eng. Civil Vinicius Ferreira - CREA.RS 150330

Arq. Elise Dutra - CAU A 46844-4

Arq. Estela Halpern - CAU A 42815-9

Av. Ferreira Viana, nº. 1135, Areal, CEP 96085-000, Pelotas/RS - Tel.: (053) 3227 15 13

Site: www.pelotas.rs.gov.br - E-mail: ugp@pelotas.com.br

Prancha

03/14

Escala

INDICADA

Data

MAR / 2016